

# Galaxie 500 Site

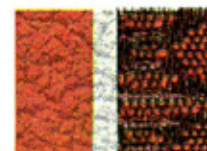
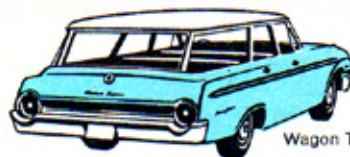
## WAGON COLORS AND UPHOLSTERY

### COLORS



**TWO TONE COMBINATIONS**—There are 13 two tone combinations available for '62, as shown at right. (Country Squires take single colors only.) First letter represents upper body color, second letter lower body color. For instance, "M/T" is Corinthian White upper, Sandshell Beige lower. In most cases lower color determines interior trim. See your Ford Dealer for exceptions.

M/A	M/J	M/E	M/P	M/D	M/H	M/R
M/Q	M/F	T/Z	F/E	M/T	M/Z	



Pleated Vinyl/Cloth  
A • M • J • Q

### UPHOLSTERY

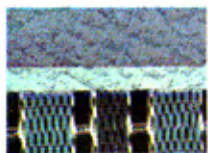
#### RANCH WAGON



All-Vinyl (steerhead)  
A • M • J • Q • F • E  
H • P • D • T • Z • R

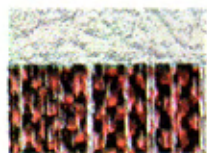


Vinyl/Woven Plastic  
A • M • J • Q



Vinyl/Woven Plastic  
A • M • Q • F • E • H

#### COUNTRY SEDAN



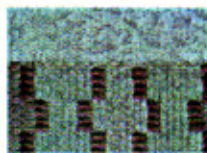
All-Vinyl  
A • M • J • Q



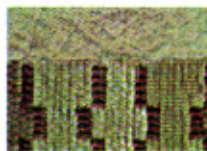
Vinyl/Woven Plastic  
A • M • J • Q



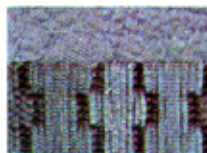
Vinyl/Woven Plastic  
A • M • T • Z • R



Vinyl/Woven Plastic  
M • D

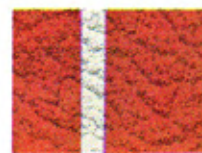


Vinyl/Woven Plastic  
M • P

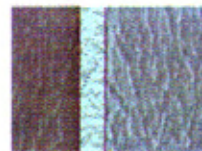


Vinyl/Woven Plastic  
A • M • F • E • H

#### COUNTRY SQUIRE



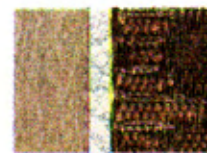
Pleated All-Vinyl  
A • M • J • Q



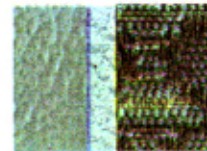
Pleated All-Vinyl  
A • M • F • E • H



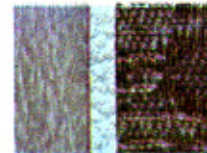
Pleated All-Vinyl  
A • M • T • Z • R



Pleated Vinyl/Cloth  
A • M • T • Z • R



Pleated Vinyl/Cloth  
M • D



Pleated Vinyl/Cloth  
A • M • F • E • H